

# MOSAIQ™ Oncology EMR

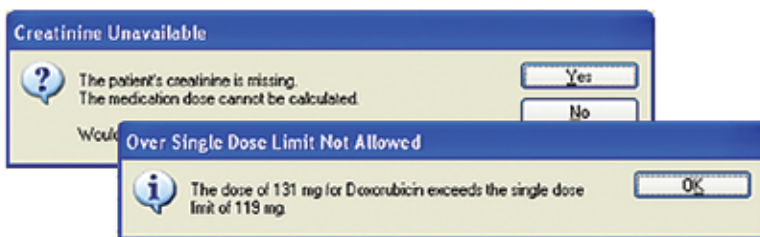
## IMPAC's Software Supports the Tenets of the ASCO EHR Initiative

*"Your Electronic Health Record (EHR)...should...support the delivery of standardized care, improve patient safety, especially by means of embedded clinical decision support; and ensure that clinical and demographic information is available when, where and how you want it."* The Oncology Electronic Health Record Field Guide, ASCO 2008

- IMPAC selected for 2007 ASCO EHR Symposium
- IMPAC selected for the 2007 and 2008 ASCO Lab

### IMPAC's MOSAIQ Medical and Radiation Oncology EMR has been facilitating clinical decision support since 1990

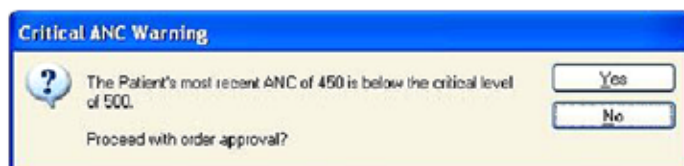
- Chemotherapy Regimens following standard guidelines easily ordered by the physician
- Security rights assure that only the appropriate clinician can approve orders
- Clinical decision support is embedded throughout the software



- Enabling easy access to all patient information



- Enabling configurable medication order messages



### Providing patient safety alerts including:

- Exceeding maximum dose
- Out of range lab findings
- Low absolute neutrophil count
- Total lifetime dose
- Medication order warnings based on any flowsheet value including:
  - Drug allergies
  - Drug interactions
  - Duplicate therapies

### Providing easy access to:

- Patient's history
- Patient demographic information
- Labs
- Billing information

### Providing ASCO reports:

- Chemotherapy Treatment Plan and Summary reports

## contact:

To learn more about MOSAIQ,  
please contact your sales  
representative.

(888)GO-IMPAC  
sales@impac.com

(888) GO-IMPAC

impac.com/MO

Corporate Head Office, Stockholm, Sweden Tel +46 8 587 254 00 Fax +46 8 587 255 00 info@elekta.com

Regional Head Offices for Sales, Marketing & Service

Sunnyvale, CA  
Tel +1 408 830 8000  
Fax +1 408 830  
8003  
sales@impac.com

Atlanta, GA  
Tel +1 770 300 9725  
Fax +1 770 448 6338  
info.america@elekta.  
com

Henderson, NV  
Tel +1 702 992 5000  
Fax +1 702 992 5001  
support@impac.com